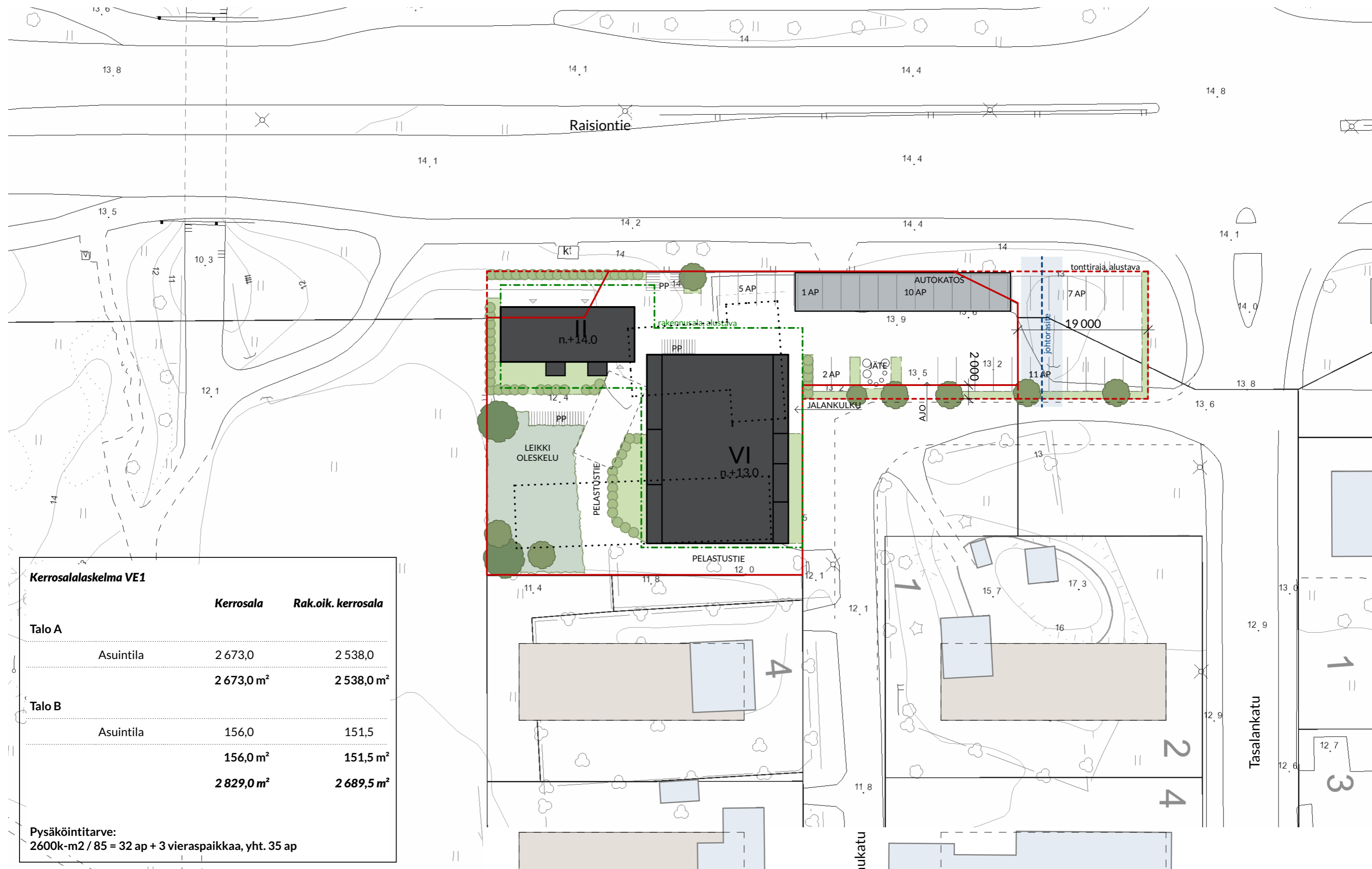




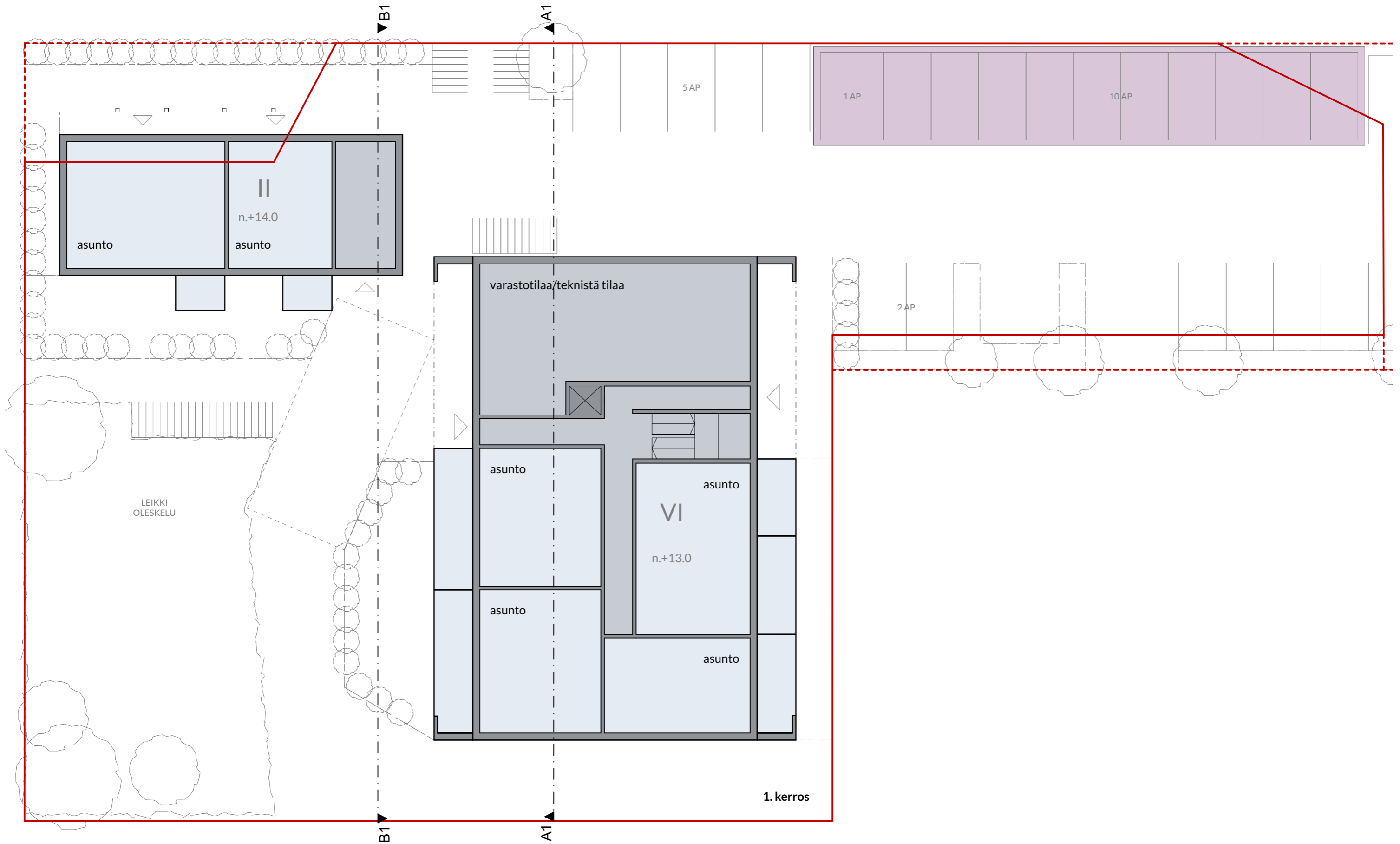
VE1 Tontinkäyttö 1:500

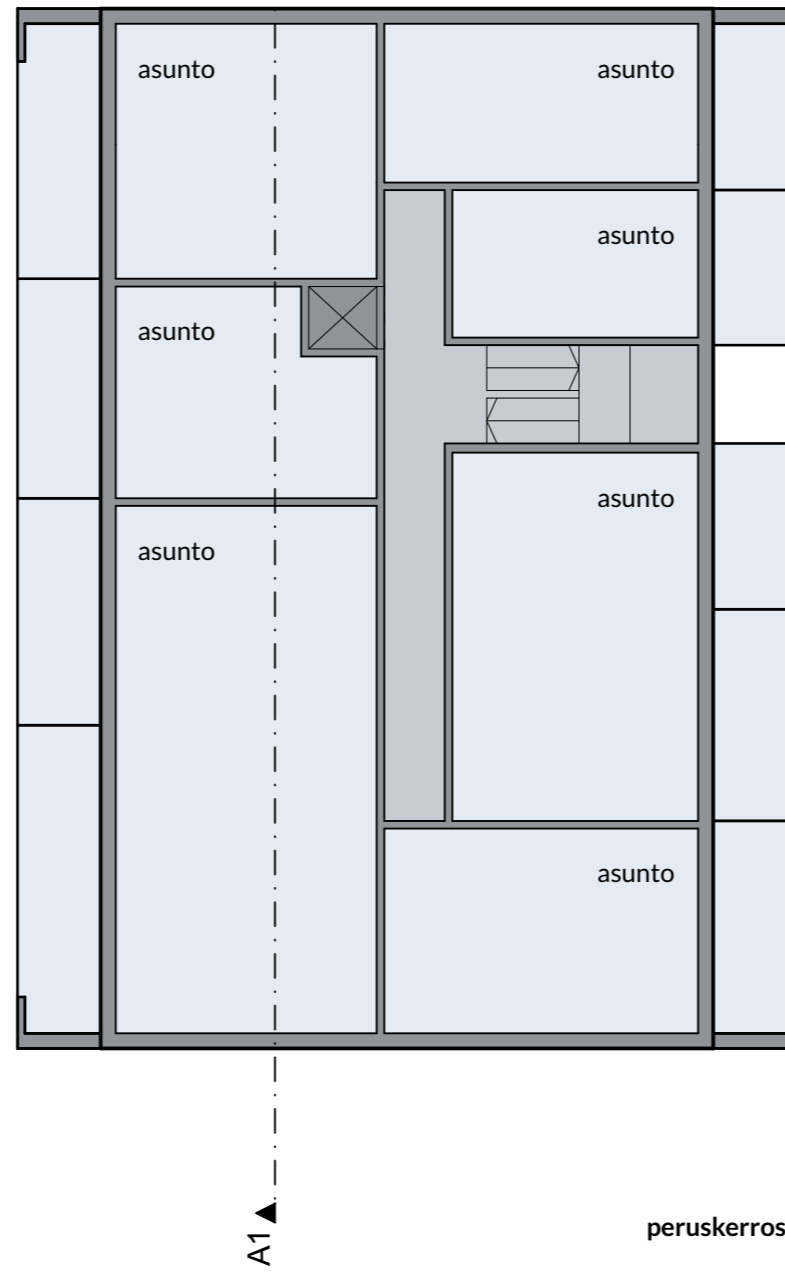
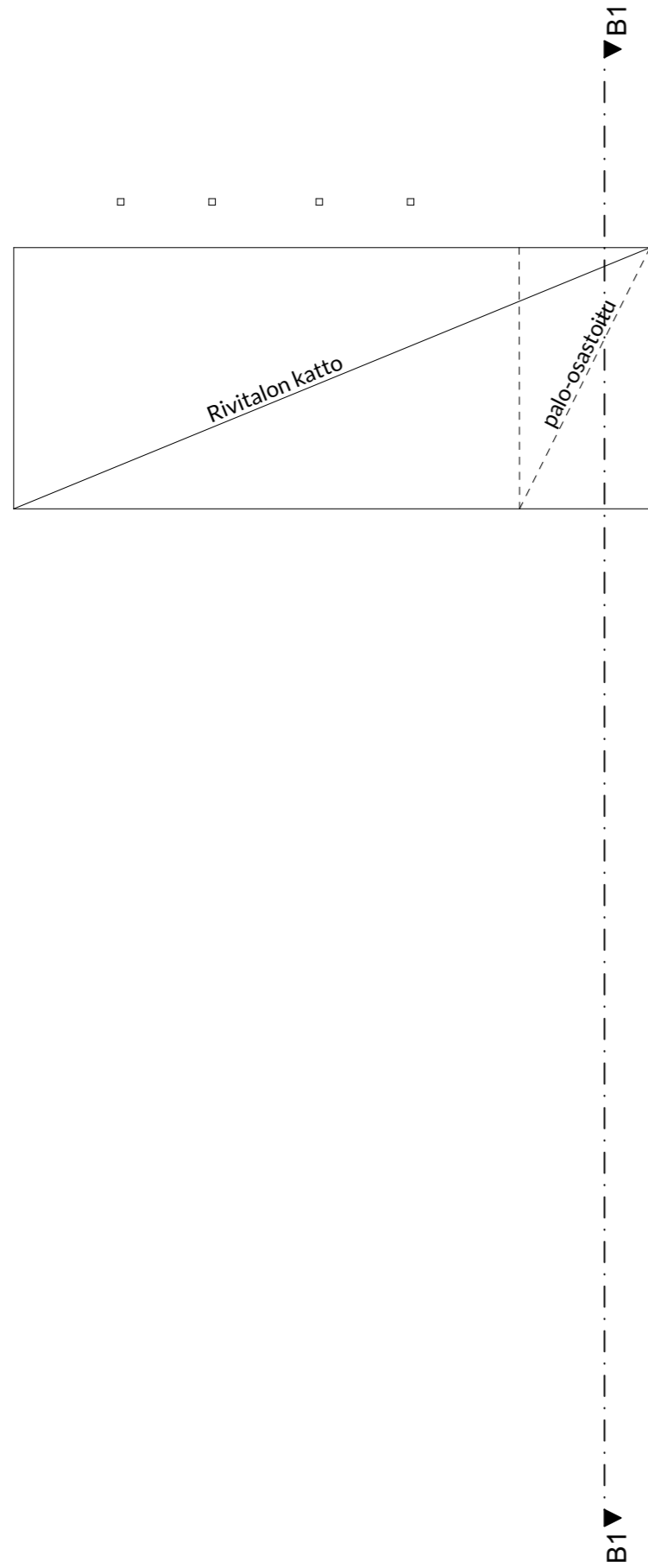


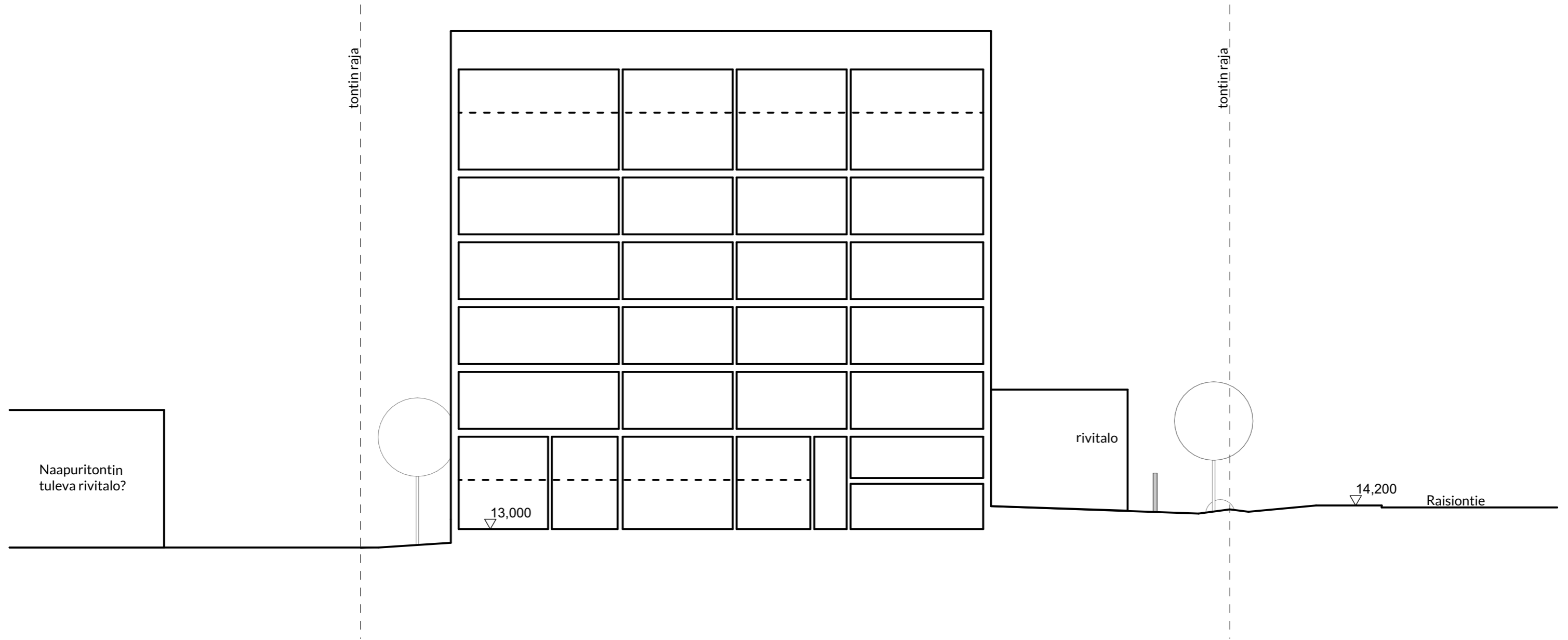
Kerrosalalaskelma VE1

	Kerrosala	Rak.oik. kerrosala
Talo A		
Asuintila	2 673,0	2 538,0
	2 673,0 m²	2 538,0 m²
Talo B		
Asuintila	156,0	151,5
	156,0 m²	151,5 m²
	2 829,0 m²	2 689,5 m²

Pysäköintitarve:
 $2600k-m^2 / 85 = 32 \text{ ap} + 3 \text{ vieraspaikkaa, yht. } 35 \text{ ap}$







LEIKKAUS A1

